



INSTALLATION INSTRUCTIONS FOR AUTOMATIC LUBEMINDER

Installation Instructions: Case AFX Series Combine 7010, 7020, 7120, 8010, 8020, 8120, 9120



WARNING

Do Not attempt to service any machine without exercising the mandatory safety shut down procedure as described in the operators manual.



The automatic chain oiler attachment gives a squirt of oil every time the hydraulic cylinder that it is connected to cycles. In this way, the machine is oiled in direct proportion to the number of cycles and adequate lubrication is assured. Clean oil, which is placed in the reservoir tank mounted on the machine, is all that is needed to lubricate the chains, sprockets, gears, or pivot bushings. The LUBEMINDER does not use any oil from the tractor hydraulic system. The hydraulic hose connected to the bottom of the oil pump assembly only serves to power a piston in the pump every time the cylinder is cycled.

TOOLING REQUIRED

- 1) Electric Drill
- 2) Adjustable Wrench
- 3) Pliers
- 4) Standard Screwdrivers

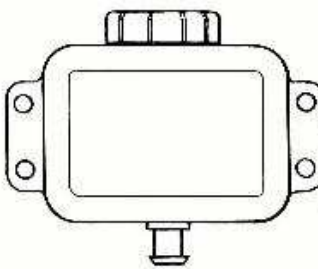
LUBEMINDER COMPONENTS



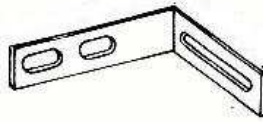
Brass Manifold
This comes pre-installed into the Pump. There is one Manifold for each oil line.

LubeMinder Pump
This is the unit that meters and dispenses the lubrication. This is a 2-piece unit, take care not to change the orientation of the top portion to the bottom portion as this will cause the unit to leak.

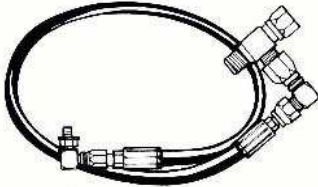
Brush Assembly
The Brush is located at the point of lubrication. Position this where it will contact the chain or sprocket without getting caught in the mechanism.



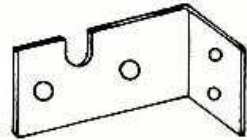
Reservoir Tank
This connects to the fitting at the top of the Pump with a short length of hose (supplied)



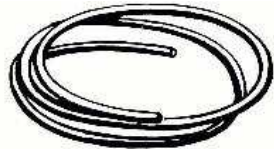
Brush Brackets
These are used to mount the Brush Assemblies.



Hydraulic Hose Assembly
This connects the LubeMinder Pump to the hydraulic source. This will be a high-pressure connection—please observe all appropriate safety precautions.



Pump Bracket
Used to mount the Pump to your piece of equipment.



Oil Feed Tubing
This tubing is used, as required, to connect the Brushes to the Manifolds.

IMPORTANT!

Components shown here may vary slightly depending on the make and model of equipment being lubricated. Refer to detailed installation instructions for specific information.

Our engineers are available to assist you with any installation questions during normal working hours, Central Standard Time, at 1-800-782-5752 or (763)295-5635

Suburban Manufacturing Inc. believes the information presented here to be accurate. Suburban Manufacturing Inc. shall not be held liable for damage or problems caused by possible design changes by the equipment manufacturer or customer-modifications of the equipment prior to the installation of this device. Liability limited to repair or replacement of the LubeMinder unit.

Case AFX Combine Installation Instructions

Step 1 Install oiler bracket and tank by drilling with the supplied drill and then attaching with 1/4" tap tight bolts (Note the hose clamp for the Lube Minder pump)

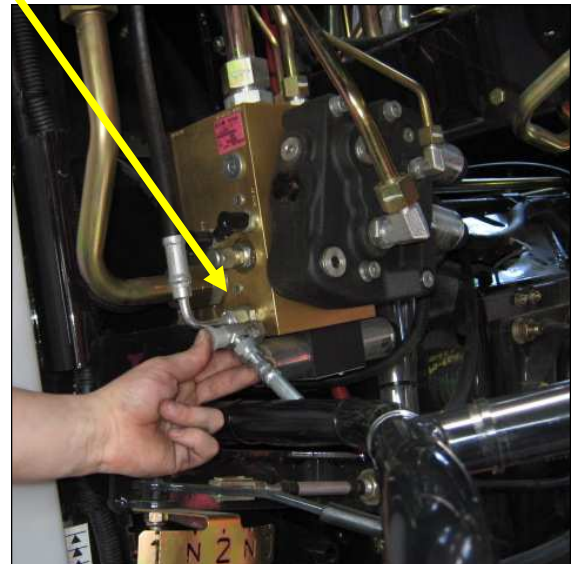


Step 2 Plumb in the hydraulic hose.

Start with Hydraulic hose coming off pump and down through panel as shown .

Route with the other hoses and use cable ties to keep away from the motor.

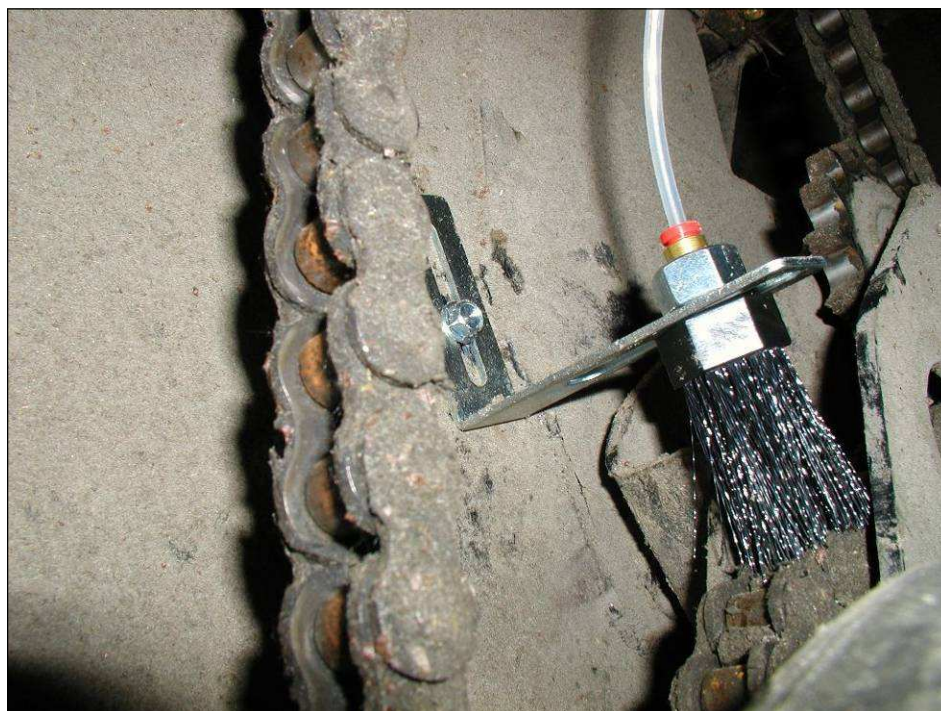
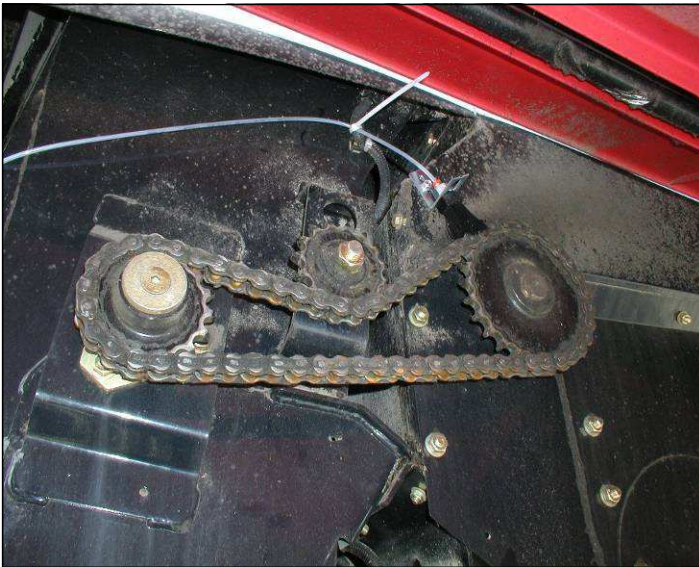
Connect to the auger unloader swing out circuit shown here. The block location is marked "C2". Note the oiler will only actuate when the unloader auger boom is swung out and back in.



Case AFX Combine Installation Instructions

Step 3 Install the brushes (p/n B92910) into the brackets, use the ½-20 nuts (**only finger tighten at this time as some adjustment will be needed**).

- For best results place the brackets over the chain and on top of a sprocket. Using the bracket as a template, mark where the holes need to be drilled, and drill a 7/32" hole.
- Secure the brackets with the self tapping screws. Adjust brackets so brushes are pushed down into the chain approximately ½". At this time snug up the ½" nuts on the brushes (**Be careful: Do NOT over tighten, as damage to brush will occur**).
- Note: more brushes may be added to a system by installing union tees (p/n B92915) in the 5/32" oil lines.



www.gosuburban.com