

# FIRE SLEEVE

## SILICON-COATED HIGH TEMPERATURE FIBERGLASS

Fire Sleeve's bulk fiberglass base and iron-oxide silicon coating make it the optimal single line solution where molten metal splash, radiant heat, chemicals, and abrasion are present. The tubular style sleeve is designed to withstand continuous heat exposure up to 500°F and intermittent heat of up to 3000°F.

In addition to protecting hoses, cables, and pipes, Fire Sleeve can protect people from incurring scorching burn injuries. The silicon coating allows the sleeve to remain extremely flexible and moisture resistant in tight radius and outdoor environments.

**Typical Applications:** Performance automotive, steel work, oil rigs, exhaust systems, high temperature cable and wiring systems

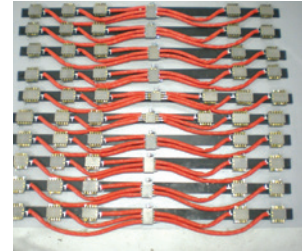
- Unaffected by hydraulic fluids, lubricants, chemicals, and oils
- Withstands exposure to molten steel, aluminum, and glass
- Designed to protect against occasional flame
- Continuous exposure up to 500°F, intermittent up to 3000°F
- Insulates against energy or temperature loss

## SIZING & ORDERING INFORMATION

### FIRE SLEEVE

PART NUMBER	MAX I.D.	PART NUMBER	MAX I.D.	PART NUMBER	MAX I.D.
FS-004	0.25"	FS-022	1.375"	FS-052	3.25"
FS-006	0.375"	FS-024	1.5"	FS-056	3.5"
FS-008	0.5"	FS-026	1.625"	FS-060	3.75"
FS-010	0.625"	FS-028	1.75"	FS-064	4"
FS-012	0.75"	FS-032	2"	FS-072	4.5"
FS-014	0.875"	FS-036	2.25"	FS-080	5"
FS-016	1"	FS-040	2.5"	FS-088	5.5"
FS-018	1.13"	FS-044	2.75"	FS-096	6"
FS-020	1.25"	FS-048	3"		

Standard lengths sold in 100' increments.



Protection from dust & rail sparks.



Flame & molten metal splash protection



Protect wires from extreme engine temps



## MATERIAL ATTRIBUTES

- ABRASION RESISTANCE
- PUNCTURE RESISTANCE
- CHEMICAL RESISTANCE
- UV PROTECTION
- NON - WICKING ABILITY
- SPALL / SPARK PROTECTION
- WEIGHT / FLEXIBILITY
- TEMPERATURE RATING