



OEM & Distributor Catalog

AUTOMATIC OIL & GREASE BANK SYSTEMS

LUBE MINDER® AUTOMATIC OILER

Proper lubrication of chains and sprockets is highly recommended by roller chain manufacturers and is critical for increasing the life of your machines components. The Lube Minder® automatic oiling system ensures that chains are properly oiled while they are warm and running. Systems are available as Complete Universal Systems or can be custom configured to meet the needs of specific applications.

UNIVERSAL SYSTEMS

SPARE PART KITS



1-4 Brush Universal Kit
PN: 170-0624



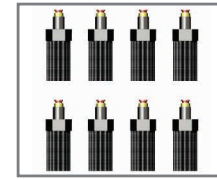
Add Line / Splice Kit
PN: 170-0600



Line Kit with Shutoff
PN: 170-0601



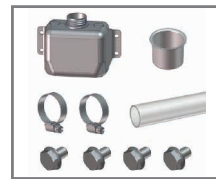
Restrictor Kit
PN: 170-0602



Brush Kit
PN: 170-0604



5-8 Brush Universal Kit
PN: 170-0628



Tank Assembly Kit
PN: 170-0605



Mini Maintenance Kit
PN: 170-0607



Universal Hardware Kit
PN: 170-0621

1) BUILD AN OILER: CHOOSE A PUMP



8 Port Pump
PN: 170-0000



10 Port Pump
PN: 170-0003



8 Port Pump - light spring
PN: 170-0004



2 Port Pump w/ ck valves
PN: 170-0000-2



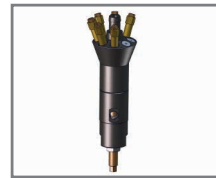
3 Port Pump w/ ck valves
PN: 170-0000-3



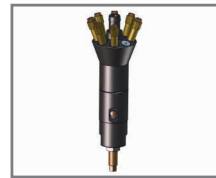
4 Port Pump w/ ck valves
PN: 170-0000-4



5 Port Pump w/ ck valves
PN: 170-0000-5



6 Port Pump w/ ck valves
PN: 170-0000-6

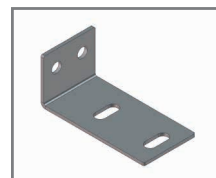


7 Port Pump w/ ck valves
PN: 170-0000-7



8 Port Pump w/ ck valves
PN: 170-0000-8

2) ASSEMBLE THE RESERVOIR TANK



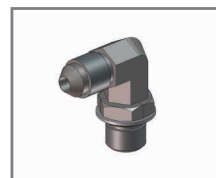
Bracket - Oiler Pump
PN: 2016



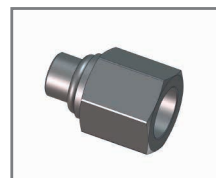
Band Clamp - Pump
PN: 5028



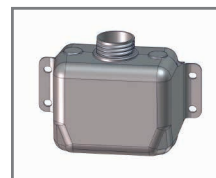
Pump Elbow
PN: 6801-4-4NWO



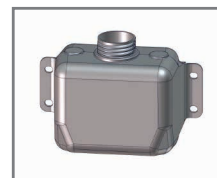
Pump Restrictor Elbow
PN: 6809-4-4NWO-RS



Male ORB to 1/4" Female
PN: 1268-4-4



2 Quart Reservoir Tank
PN: 2550



6 Quart Reservoir Tank
PN: fs10628



Oil Tank Cap
PN: 170-2553



Screen - Reservoir Tank
PN: 170-1016

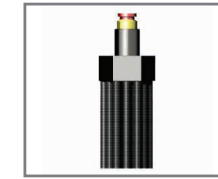


Band Clamp - Reservoir Tank
PN: 62003

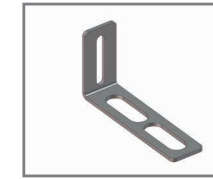
LUBE MINDER® AUTOMATIC OILER

Lube Minder® allows lubrication to penetrate into the pin and brush joints which results in maximum performance and extended equipment life. The fully adjustable pump operates without electricity and can automatically oil up to 10 chains and sprockets.

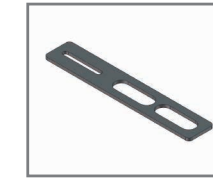
3) ADD BRUSHES & MOUNTING BRACKETS



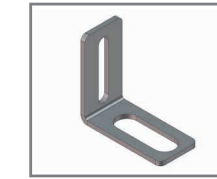
Brush
PN: 170-4514



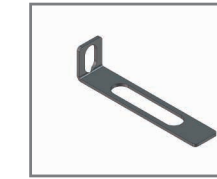
Bracket - 90° Long
PN: 170-2018



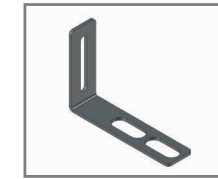
Bracket - Flat Long
PN: 170-2018-F



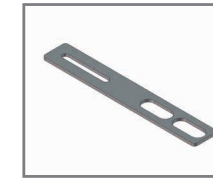
Bracket - 90° Short
PN: 170-2018-S



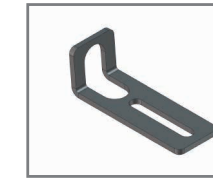
Bracket - Grain Elevator
PN: 170-2023



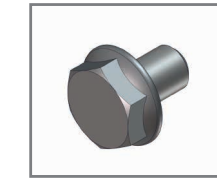
Bracket - 90° Two Slot
PN: 2012



Bracket - Flat Blank
PN: 2012-F

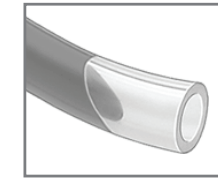


Bracket - Short Angled
PN: 170-2017

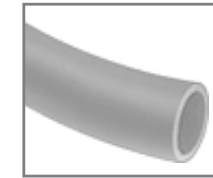


Taptite Bolt for Bracket
PN: 6019

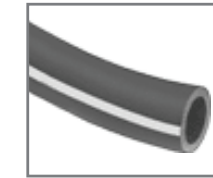
4) ROUTE TUBING & CHOOSE MOUNTING HARDWARE



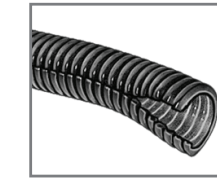
50' Nylon Brush Tubing
PN: nyl-5/32-c-50



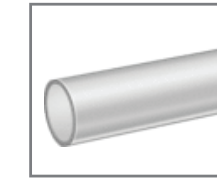
1' 5/32 Nylon Tubing
PN: 7012



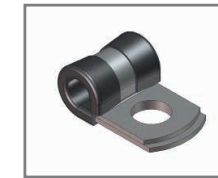
1/4" Black Poly Tubing
PN: 7081



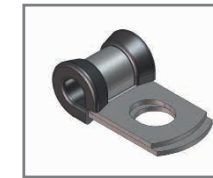
Plastic Sleeve - 1/4" I.D.
PN: 7840K31



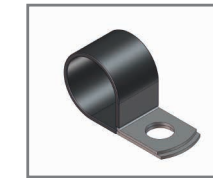
Pump Tubing - 5/8" I.D.
PN: 7010



Hose Clamp - 3/16"
PN: 6051



Hose Clamp - 5/16"
PN: 95-303



Hose Clamp - 13/16"
PN: 0708782

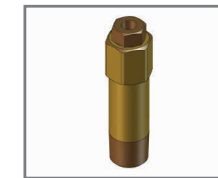


Cable Tie
PN: 7011

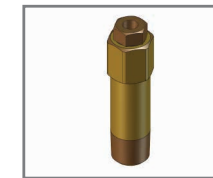


Drill Bit - 7/32"
PN: 8572

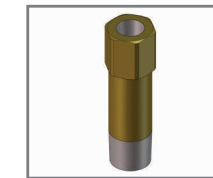
REPLACEMENT PARTS & ACCESSORIES



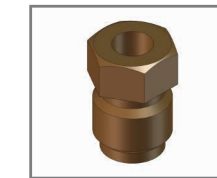
Check Valve Assembly
PN: 170-4515



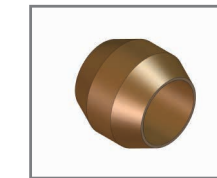
Check Valve Assembly 3psi
PN: 170-4515-3PSI



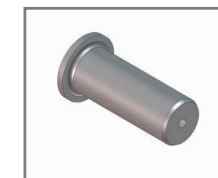
Manifold Valve Holder
PN: 170-0001



Brass Sleeve Nut
PN: 576895



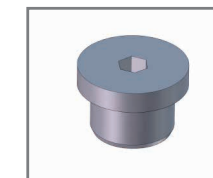
Manifold Ferrule
PN: 576894



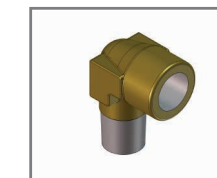
Orifice - Medium
PN: 170-1014



Orifice - Small
PN: 170-1015



1/8" NPT Plug
PN: 2107001u



Street Elbow 1/8" NPT
PN: 6002



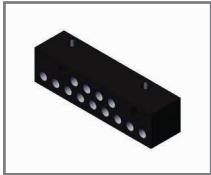
Pump Rebuild Kit
PN: 170-0620

GREASE MINDER BANK SYSTEM

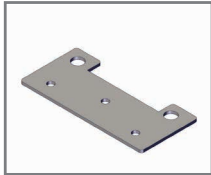
Failure to grease all zerk points on todays advanced equipment will cause machinery to become less efficient and eventually break down. The Grease Minder bank system is designed to maximize convenience by creating a central location for all zerk points. No need to spend time crawling around your equipment. Install a Grease Minder system and reduce your daily labor. The Grease Minder is available in complete kits or can be custom configured to meet the needs of your application.

GREASE BANK SYSTEM - LOW PRESSURE

Low pressure grease systems are rated for 650 psi and must be operated with pistol-type grease guns. If you are operated at a higher pressure, build with high pressure grease fittings.



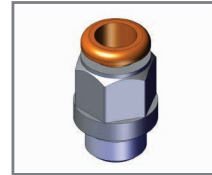
Grease Bank - 13 Ports
PN: 21999-0419



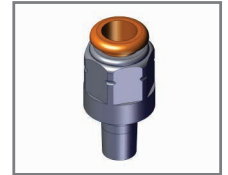
Mounting Plate - Bank
PN: 170-2038



1/8" NPT Grease Zerk
PN: 36-110



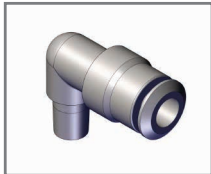
1/4" x 1/8" NPT Straight
PN: 68pl-4-2



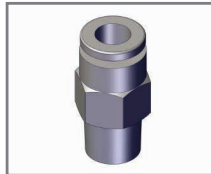
1/4-28 Taper x 1/4" Straight
PN: 21999-0413



1/4-28 Taper x 1/4" 90°
PN: 244054



1/8" Taper x 1/4" Elbow
PN: 20-068N



1/8" Taper x 1/4" Straight
PN: 68pl-4-2-TP



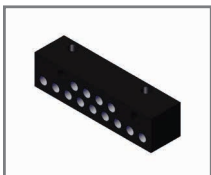
Low Pressure Tubing
PN: 21999-0433



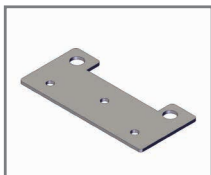
Low Pressure Grease Filled Tubing
PN: 21999-0433-GF

GREASE BANK SYSTEM - HIGH PRESSURE

High pressure grease systems are rated for 3480 psi and may be operated with various grease guns.



Grease Bank - 13 Ports
PN: 21999-0419



Mounting Plate - Bank
PN: 170-2038



1/8" NPT Grease Zerk
PN: 36-110



#4 JIC to 1/8" Adaptor
PN: 2404-4-2



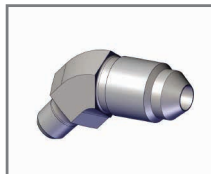
#4 JIC to 1/8" Adaptor 45°
PN: 2503-4-2



#4 JIC to 1/8" Adaptor 90°
PN: 2501-4-2



#4 JIC to 1/4-28 Taper
PN: 21999-0682



#4 JIC to 45° 1/4-28 Taper
PN: 21999-0684



#4 JIC to 90° 1/4-28 Taper
PN: 21999-0683



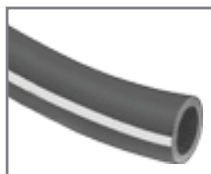
1/8" Male Hose End
PN: 113CY-2-2



1/8" Female Hose End
PN: 106CY-4-2



1/8" Male Fixed Hose End
PN: 101CY-2-2



High Pressure Tubing
PN: 100R7



High Pressure Grease Filled Tubing
PN: 21999-0686